

## MYSTERY QUILT?????

### Part 6

Please read all instruction before beginning your blocks. You may wish to use an alternative method to the one given to complete the individual blocks.

Detailed instructions are given for rotary cutting methods and machine piecing. A  $\frac{1}{4}$ " seam allowance is to be used throughout.

#### Requirements

Backing - 4 metres

Binding - 60cms

Batting - 78" x 78"

#### Cutting

**Light Scraps** Cut 10 strips 5" x 20" or equivalent. Cut at 5" intervals to create 5" squares - cut 40 squares.

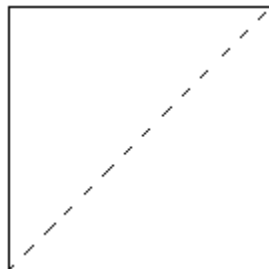
**Dark Scraps** Cut 10 strips 5" x 20" or equivalent. Cut at 5" intervals to create 5" squares - cut 40 squares.

**Contrast Fabric** Cut 8 strips  $1\frac{1}{2}$ " wide.

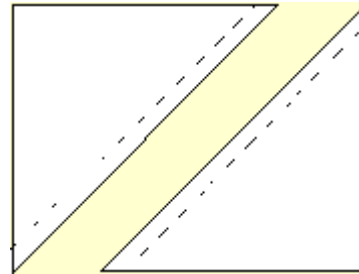
**Binding** Cut 8 strips  $2\frac{1}{2}$ " wide.

#### Construction

1. Draw a diagonal on the wrong side of each of the 40 light squares cut in [part 5](#).



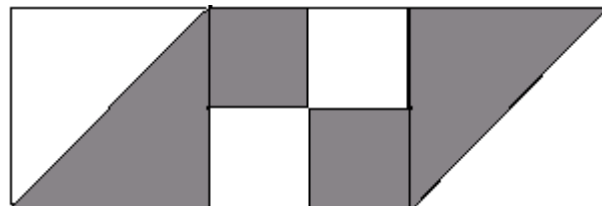
3. Cut along the diagonal and press open. Press the seam allowance towards the dark fabric.



4. Trim the bias squares so that they measure  $4\frac{1}{2}$ " square. Make 80 bias squares.

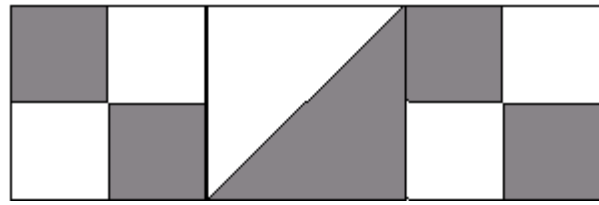
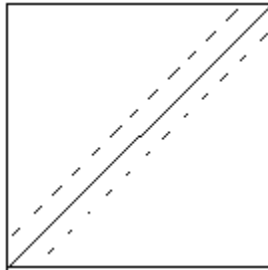


5. Sew a bias square to either side of one of the four patches constructed in [part 1](#). Construct 20 of these units which should measure  $12\frac{1}{2}$ " x  $4\frac{1}{2}$ ".



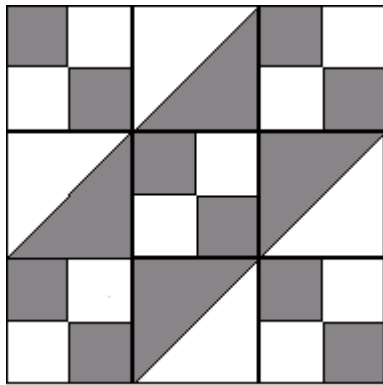
6. Sew a four patch constructed in part 1 to either side of the remaining bias squares. Construct 40 of these units which should measure  $12\frac{1}{2}$ " x  $4\frac{1}{2}$ ".

2. With right sides together place a light square on top of a dark square and sew a  $\frac{1}{4}$ " either side of the diagonal.

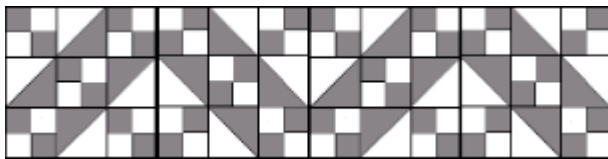


7. Join one of these units to either side of the units constructed in the previous step to form a Jacob's Ladder block. Construct 20 of these blocks which should measure  $12\frac{1}{2}$ " x  $12\frac{1}{2}$ ".

©Anne Bartlett 1996, 97, 2001



8. Join four Jacob's Ladder blocks together to make a strip which measures  $12\frac{1}{2}$ " x  $48\frac{1}{2}$ ". Construct four strips. Leave the remaining four as single blocks



9. Join the four  $24\frac{1}{2}$ " squares constructed in part 5 together to form a  $48\frac{1}{2}$ " square.
10. Join together the  $1\frac{1}{2}$ " strips for the narrow border to form the following lengths:-  $48\frac{1}{2}$ " (2),  $72\frac{1}{2}$ " (2) and  $12\frac{1}{2}$ " (4).
11. Sew a  $1\frac{1}{2}$ " x  $48\frac{1}{2}$ " strip of the narrow border to the left and right sides of the

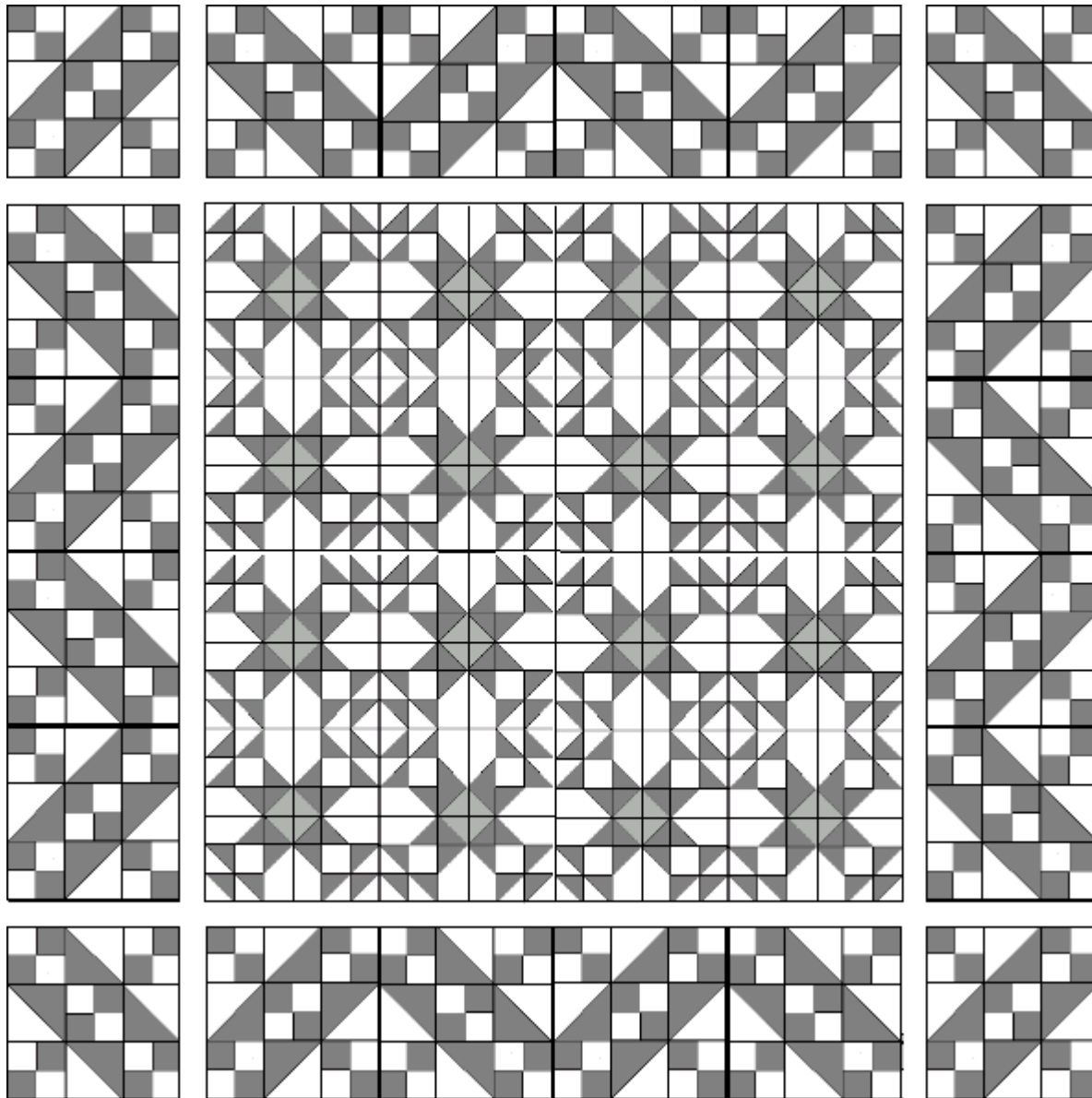
12. Sew a  $12\frac{1}{2}$ " x  $48\frac{1}{2}$ " strip of Jacob's Ladder blocks to the left and right sides of the quilt top. Press seam allowance towards narrow border.
13. Sew a  $1\frac{1}{2}$ " x  $72\frac{1}{2}$ " strip of the narrow border to the top and bottom of the quilt.
14. Sew the  $12\frac{1}{2}$ " strips of the narrow border to either end of the remaining  $12\frac{1}{2}$ " x  $48\frac{1}{2}$ " strips of Jacob's Ladder blocks.
15. Sew a single Jacob's Ladder block to either end of the strip making sure that the block is oriented correctly so that the design is continued.
16. Sew strip of six Jacob's Ladder blocks to top and bottom of quilt.

### Finishing

1. Layer quilt top, batting and backing ready for quilting.
2. Quilt using your personal choice of design
3. Bind quilt

quilt top. Press seam allowance towards  
the border.

©Anne Bartlett 1996, 97, 2001



©Anne Bartlett 1996, 97, 2001

[Mystery Quilt Page](#)

[Top](#)

[Part5](#)

[The finished quilt](#)